



50 : 1
AIR-HYDRAULIC
PUMP
45-5210-00

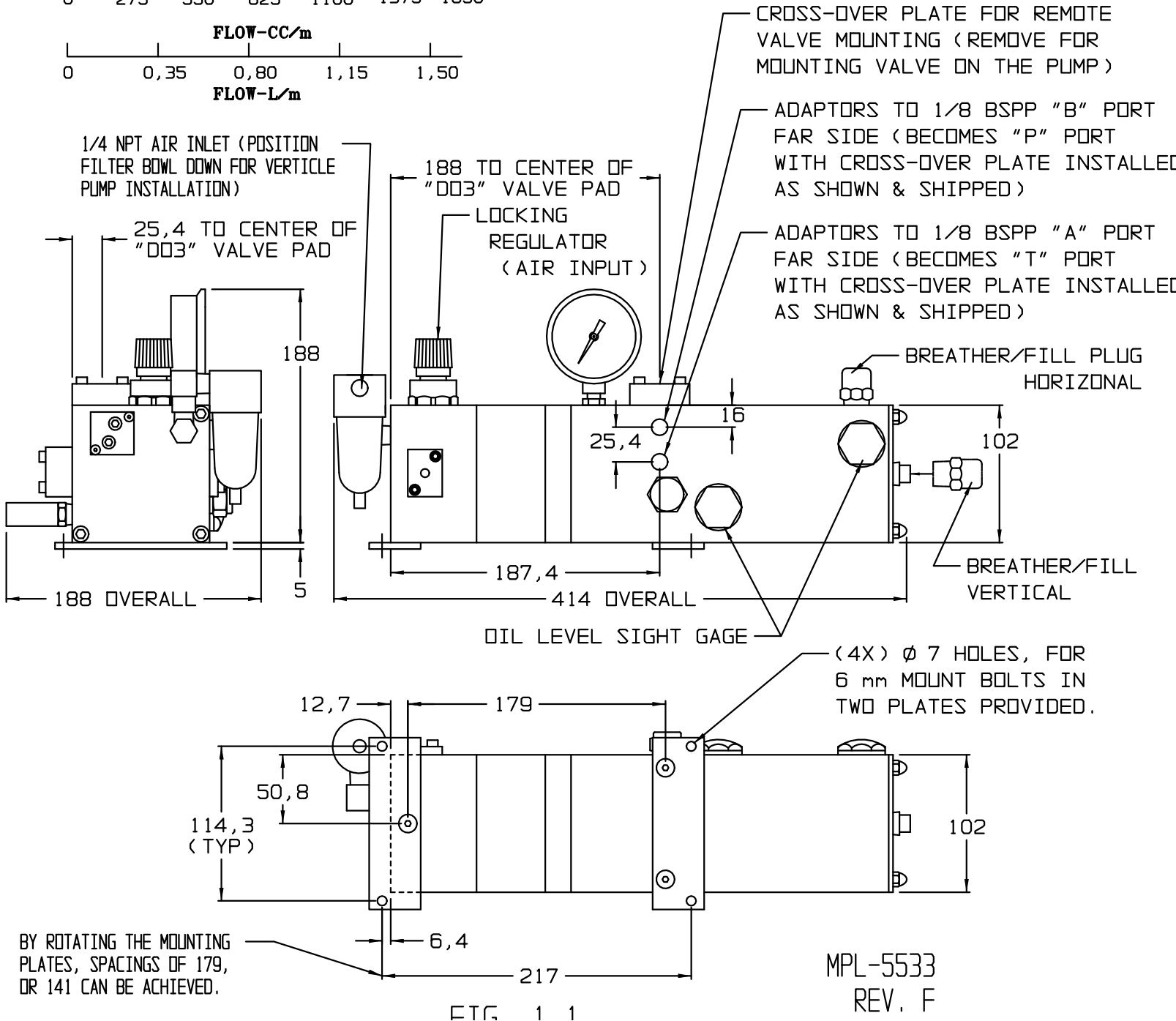
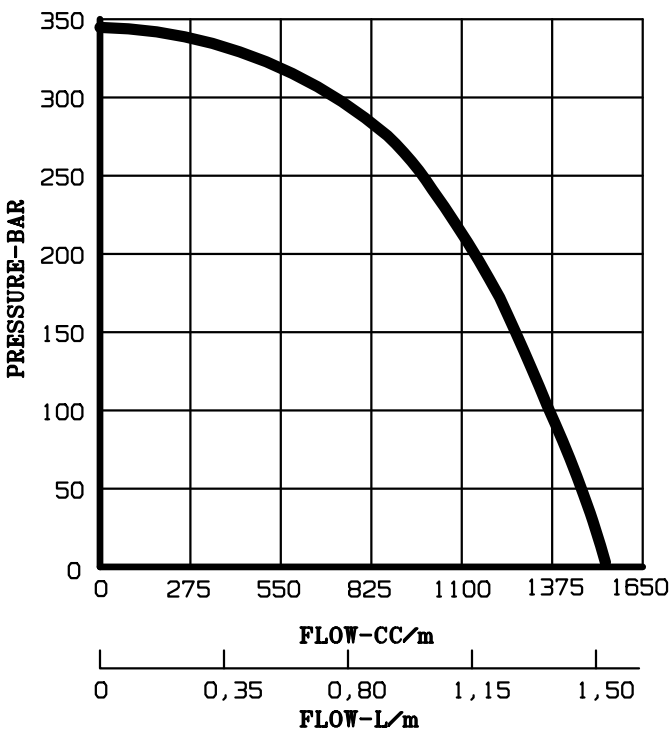
1334 E. 6th AVE.
EMPORIA, KS 66801
800 992-0236



MPL-5533
REV. F
ECN2542

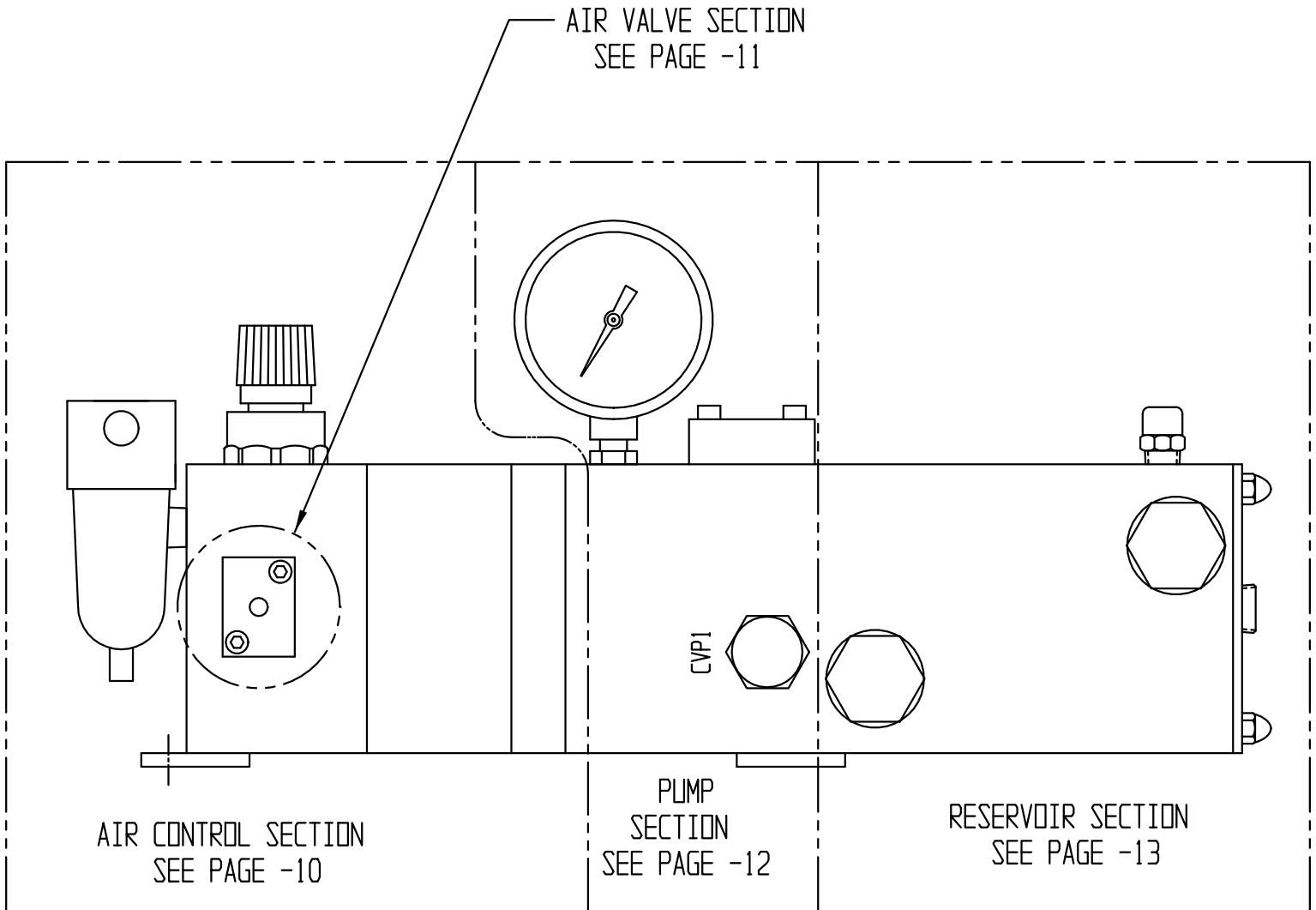
SECTION 1.0 SPECIFICATIONS

PUMP OUTPUT RATIO....50 : 1
 AIR INPUT.....3 to 9 BAR
 HYDRAULIC PRESSURE OUTPUT...175 to 350 BAR
 RESERVOIR CAPACITY....HORIZONTAL = 1000 c.c
 VERTICAL = 1000 c.c
 MOUNTING OPTIONS.....HORIZONTAL AS SHOWN
 VERTICLE WITH RESEVOIR
 UP AND FILTER BOWL DOWN
 ANODIZED ALUMINUM CONSTRUCTION....
 ...WEIGHT = 8,6 kg.



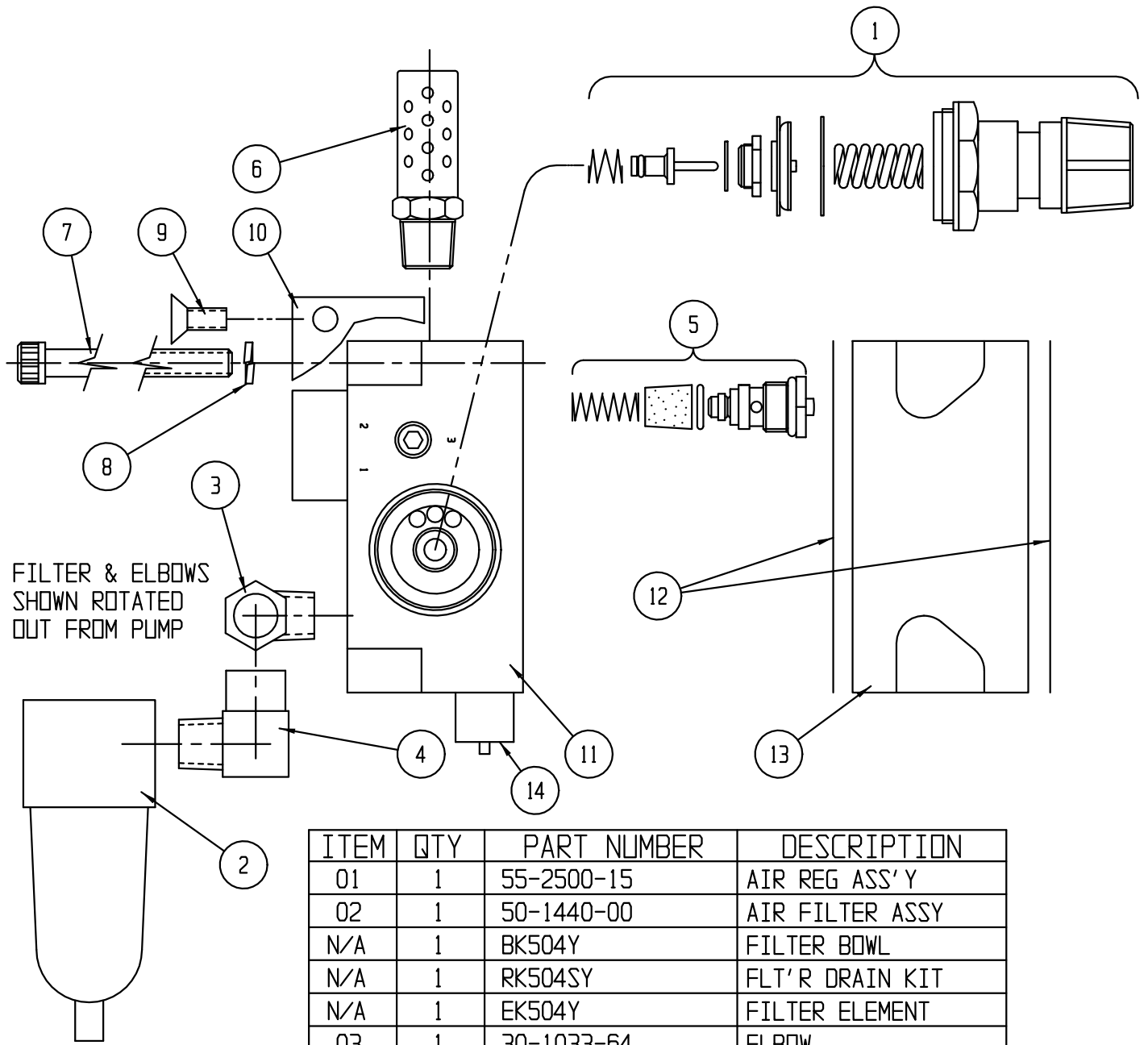
ETC 1 1

4.1 PUMP SECTIONS



MPL-5533
REV. F
ECN2542

4.1.1 AIR CONTROL SECTION



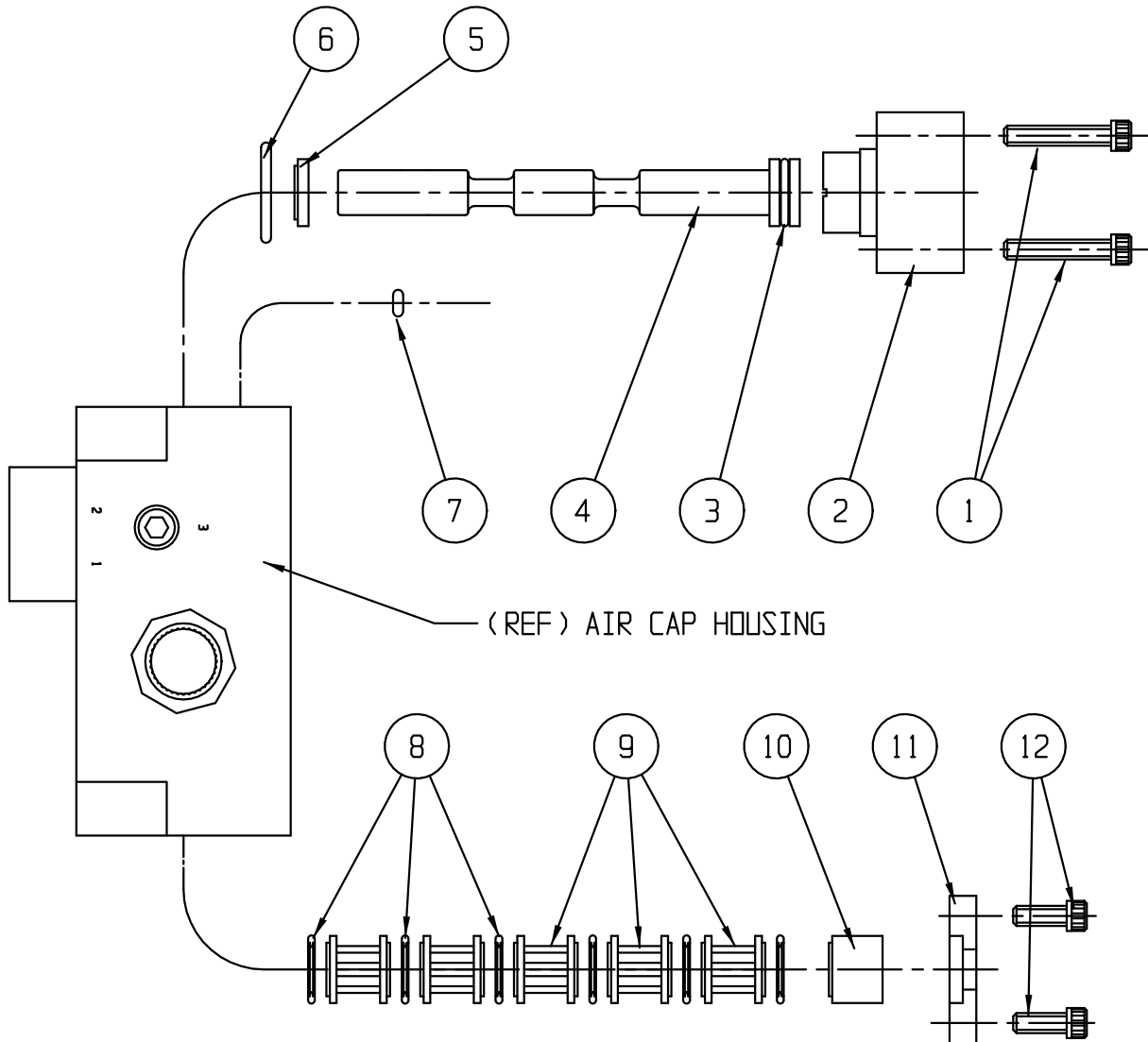
ITEM	QTY	PART NUMBER	DESCRIPTION
01	1	55-2500-15	AIR REG ASS'Y
02	1	50-1440-00	AIR FILTER ASSY
N/A	1	BK504Y	FILTER BOWL
N/A	1	RK504SY	FLT'R DRAIN KIT
N/A	1	EK504Y	FILTER ELEMENT
03	1	30-1033-64	ELBOW
04	1	30-1034-44	ELBOW
* 05	1	55-2500-38	2-WAY AIR VALVE
* 06	1	55-2500-34	MUFFLER
07	4	5/16-18 x 4.5	S.H.C.S.
08	4	5/16 HI COLLAR	LOCK WASHER
09	3	21-4100-24	FL.HD.CAP SCR.
10	2	85-5400-05	BRACKET
11	1	OP-160	AIR CAP HOUSING
* 12	2	55-2500-28	AIR BODY GASKET
13	1	EP-200	AIR BODY
14	1	55-2500-45	VALVE, RELIEF

* INCLUDED IN AIR CONTROL SECTION REPAIR KIT--62-5556-00
 APPLY TORQUE TO ALL SFA'S PRIOR TO INSTALLATION.

MPL-5533

Prefix-000004-Suffix

4.1.2 AIR VALVE SECTION

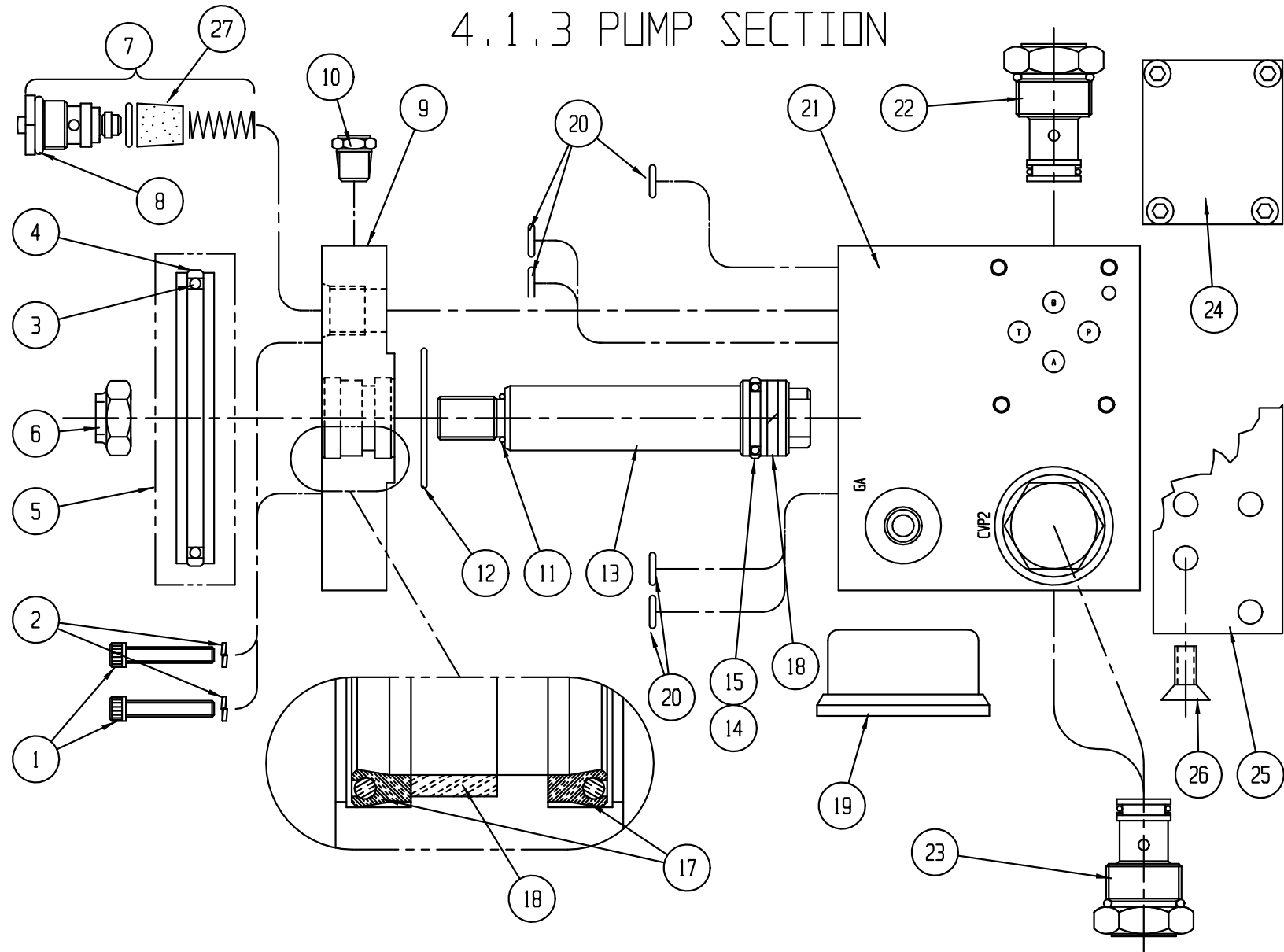


ITEM	QTY	PART NUMBER	DESCRIPTION
01	2	10-24 x 1"	S.H.C.S.
02	1	EP-159-2	PILOT CAP
* 03	1	55-2500-39	O-RING
* 04	1	55-2500-43	AIR SPOOL
05	1	EP-158	BUSHING (SHORT)
* 06	1	55-2500-40	O-RING
* 07	1	55-2500-41	O-RING
* 08	6	55-2500-02	TEE-SEAL
09	5	EP-104	CAGE
10	1	EP-157	BUSHING (LONG)
11	1	EP-159-1	SPOOL CAP
12	2	10-24 x 1/2"	S.H.C.S.

* INCLUDED IN AIR VALVE SECTION REPAIR KIT-- 62-5556-01
 APPLY IMPORTANT TO ALL SEALS PRIOR TO INSTALLATION

MPI -5533

4.1.3 PUMP SECTION



ITEM	QTY	PART NUMBER	DESCRIPTION
01	4	1/4-20 NC x 1	SOC HD CAP SCR
02	4	1/4 HI COLLAR	LOCK WASHER
* 03	1	55-2500-03	O-RING
* 04	1	55-2500-04	PISTON SEAL
05	1	55-2500-29	AIR PISTON ASS'Y.
06	1	EP-304	LOCK NUT
* 07	1	55-2500-38	VALVE ACTUATOR
* 08	1	39-0000-37	O-RING
09	1	EP-320	RATIO PLATE
* 10	1	55-2500-35	BREATHER
* 11	1	55-2500-44	O-RING
* 12	1	55-2500-07	O-RING
13	1	OP-305	PIST & ROD

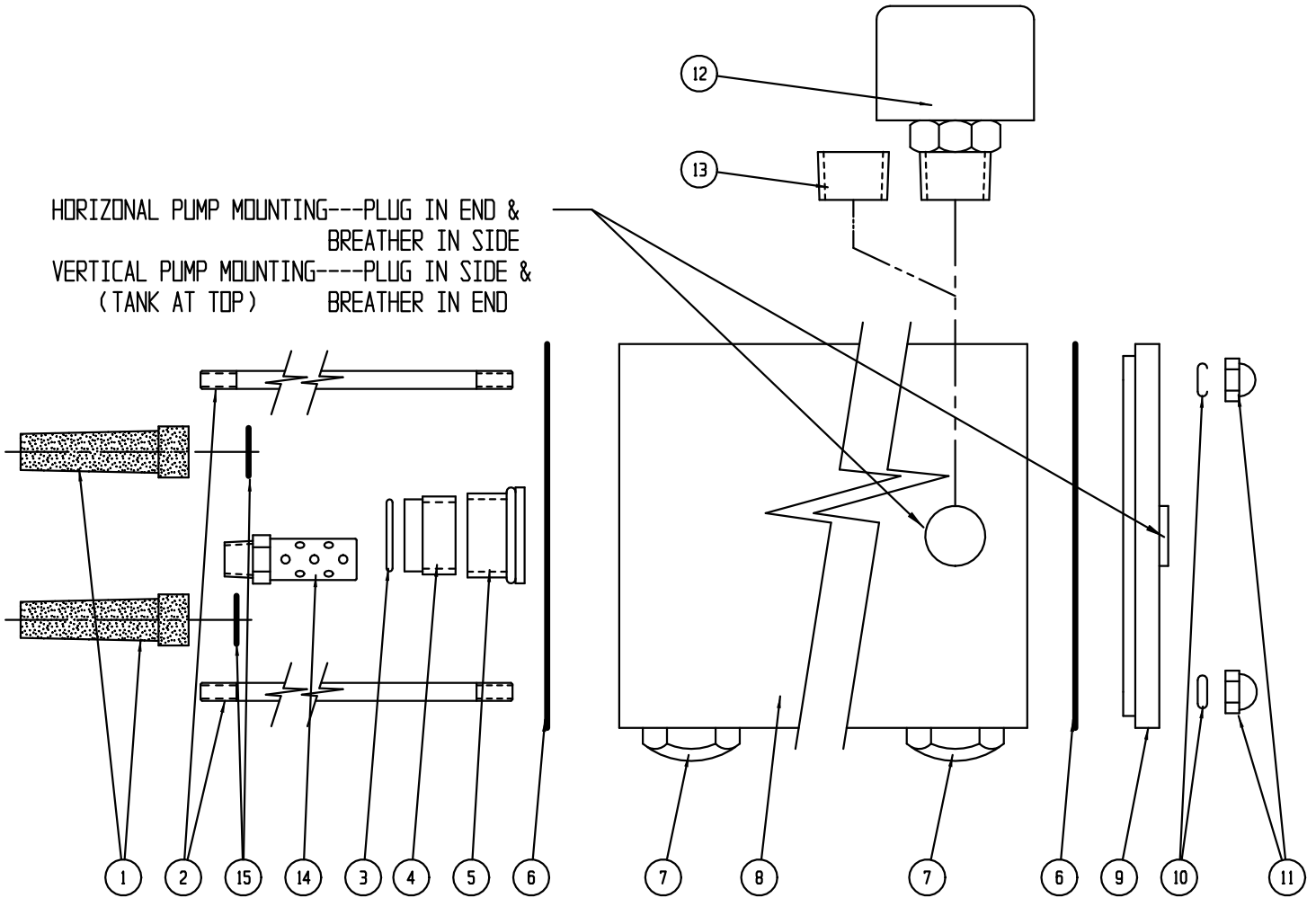
ITEM	QTY	PART NUMBER	DESCRIPTION
* 14	1	55-2500-00	O-RING
* 15	1	55-2500-08	PISTON SEAL
* 17	2	55-2500-10	ROD SEAL
* 18	2	55-2500-12	ROD WEAR RING
19	1	72-2121-62	GAGE
* 20	5	55-2500-05	O-RING
21	1	(NON-REP. PART)	HYDRAULIC BODY
22	1	55-2500-18	CHECK VALVE
23	2	55-2500-42	CHECK VALVE
24	1	93-1989-00	CROSS-OVER ASSY
25	1	85-5400-05	BRACKET
26	2	21-4100-24	FLT HD CAP SCR
27	1	55-2500-46	TWO-WAY FILTER

* INCLUDED IN PUMP SECTION REPAIR KIT--46-0000-48

MPL-5533

Prefix-000005-Suffix

4.1.4 RESERVOIR SECTION



* INCLUDED IN RESERVOIR SECTION REPAIR KIT--46000-049
 APPLY LUBRICANT TO ALL SEALS PRIOR TO INSTALLATION.
 DO NOT USE SILICONE TYPE LUBRICANTS.
 APPLY TEFLON TAPE TO PLUG PIPE THREADS.

ITEM	QTY	PART NUMBER	DESCRIPTION
* 01	2	55-2500-21	STRAINER
02	4	DP-581	STUD
* 03	1	55-2500-11	O-RING
* 04	1	55-2500-17	CHECK VALVE
05	1	30-6011-99	PLUG
* 06	2	55-2500-22	GASKET
07	2	10364	SIGHT GAGE
08	1	DP-580	RESERVOIR SHELL
09	1	DP-504	RESERVOIR CAP
* 10	4	39-0000-09	O-RING
11	4	10-24	ACORN NUT
12	1	85-5944-12	BREATHER
13	1	55-2500-31	PLUG (NPT)

MPL-5533